



Stand out from the crowd with the Sky Banner and its large print area!  
This horizontal banner attaches easily to the Zoom Tent 3x3 poles using clamp brackets (to be ordered separately).



**Zoom Tent 3x3, clamp brackets and weights not included**

## Product Specifications

- Horizontal banner with fibreglass poles (2 vertical poles and 1 horizontal pole in 2 parts), plastic hooks
- Compatible with the Zoom Tent 3x3
- Clamp brackets to be ordered separately (2 units of ZT-FCB)
- Recommended for use with 2 Zoom Tent weights per pole (optional)
- Graphic attachment with printed pole pocket and velcro fasteners
- Single-sided graphic only
- Wind resistance: up to 18 mph / 29 km/h (with ZT-BASE)
- Non padded carry bag included with one shoulder strap, one carry handle, one external pocket (for the graphic)

**Recommended with:**



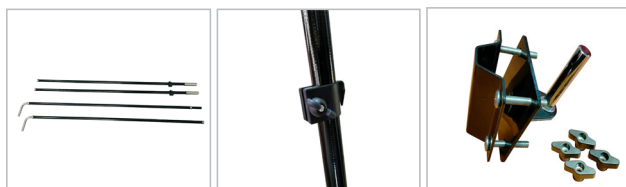
**Zoom Tent Weight (unit)  
ZT-BASE**

## Features and Benefits

- Quick to assemble
- Large print area

## Recommended Media

- Water repellent graphic



Fiberglass poles

Vertical poles detail

Clamp bracket  
not included

The printing templates provided are for guidance only. They take into account internal processes which may vary depending on your equipment, materials and finishes. If you are printing your own material, it is your responsibility to test the compatibility of your media with the product before use.

Outdoor

# ZOOM TENT 3X3 SKY BANNER

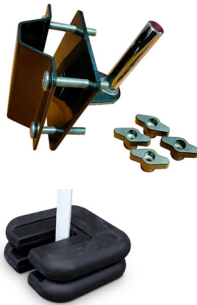
V1



**Content:**

- 2 x vertical poles
- 1 x horizontal pole (in 2 parts)

**To be ordered separately:**



- 2 x Clamp brackets (2 x ZT-FCB)
- 8 x Zoom Tent weights (8 x ZT-BASE)

**Hardware Information**

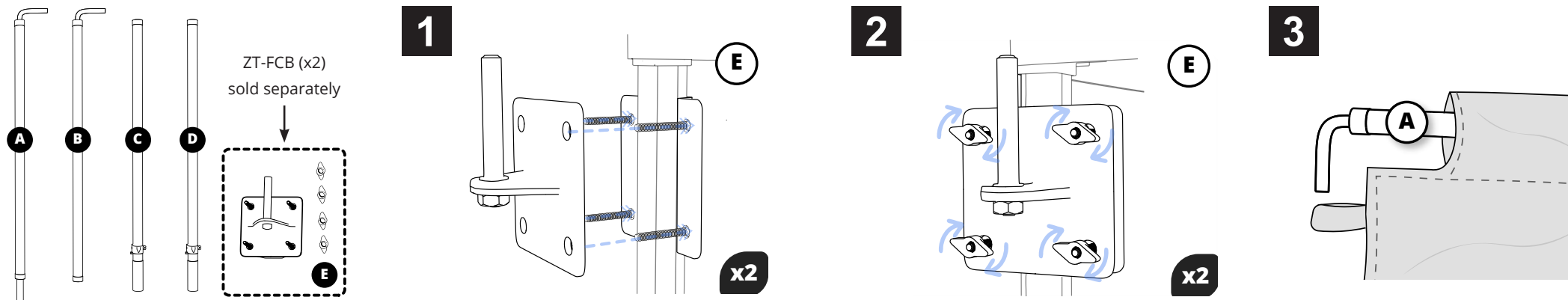
Code	Description	Hardware assembled dimensions (mm) w x h	Hardware assembled weight	Package dimensions (mm) h x w x d	Package weight
ZT33-H-SKY	Zoom Tent 3x3 Sky Banner	3000 x 1515	1,52 kg*	180 x 1650 x 80	2,8 kg
ZT-FCB	Zoom Tent clamp bracket	100 x 135 x 95	0,96 kg	100 x 145 x 105	1 kg

\*Without graphic

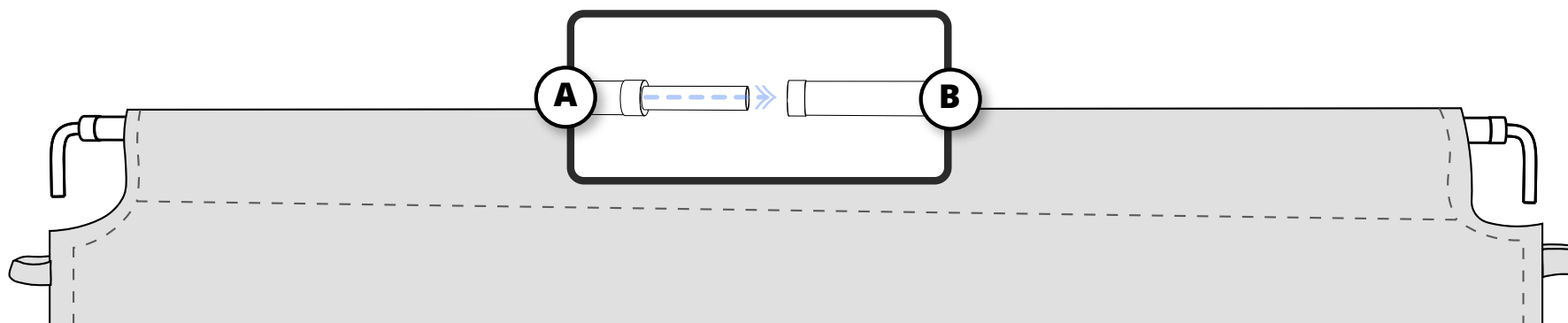
**NB:** the clamp bracket can also be used with a Zoom+ flag pole (XS or S size) on Zoom Tents and Zoom Tent Eco.



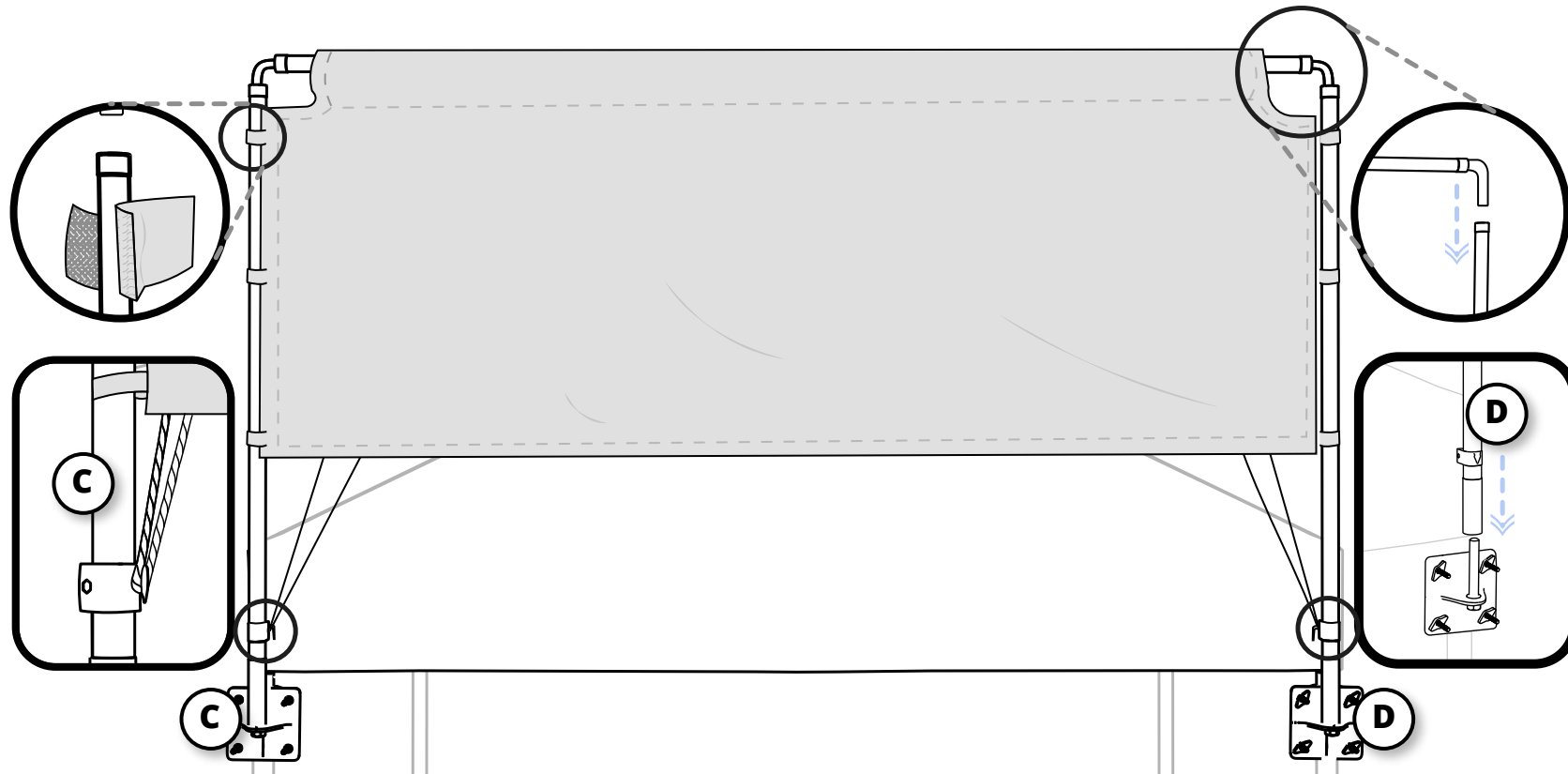
## Assembly of the hardware and graphic



**NB:** The Zoom Tent poles are hexagonal and are not oriented in the same direction. As a result, the brackets are not positioned exactly the same way on each side. One of the two brackets is slightly more off to the side than the other.

**4**

## Assembly of the hardware and graphic

**5**

**NB:** remember to add  
Zoom Tent weights

