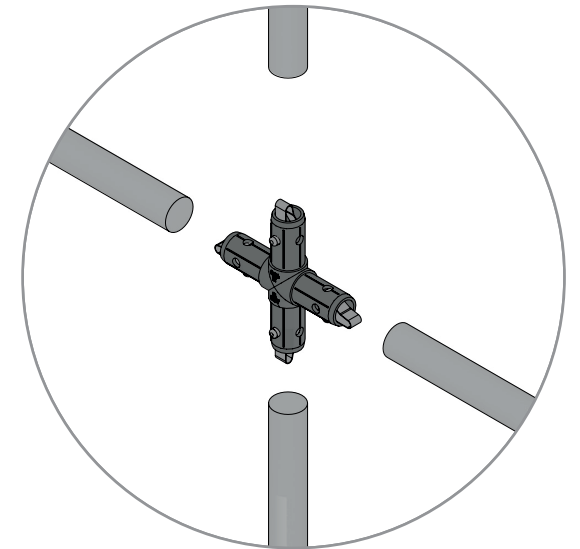
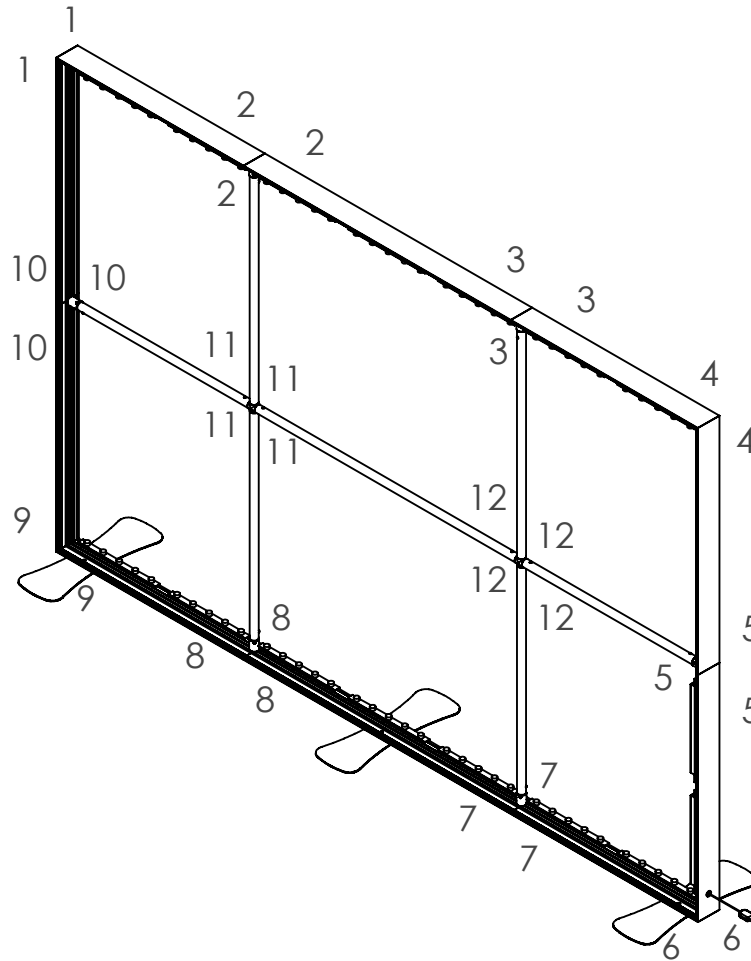
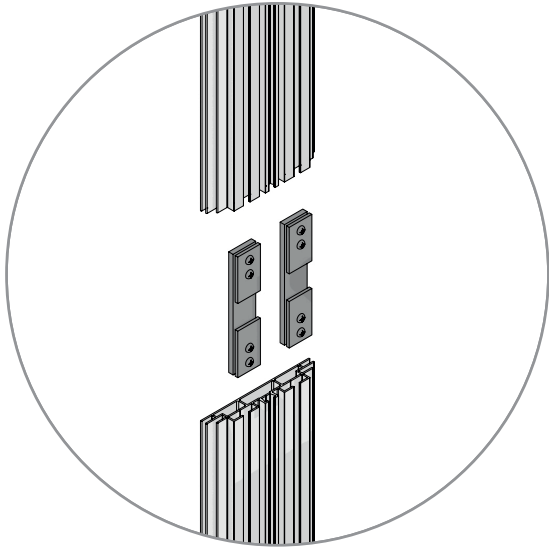
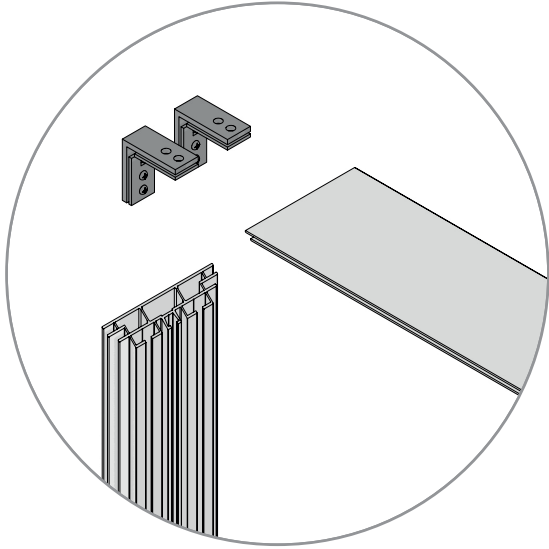




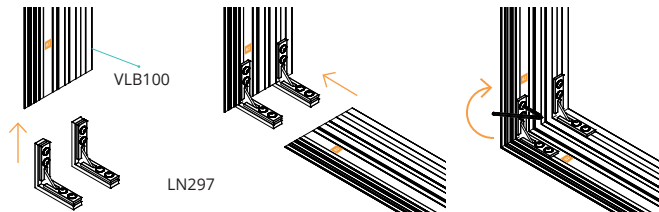
Sections marking 3000(l) X 2000(h) mm

Follow the numbered markings to assemble the frame

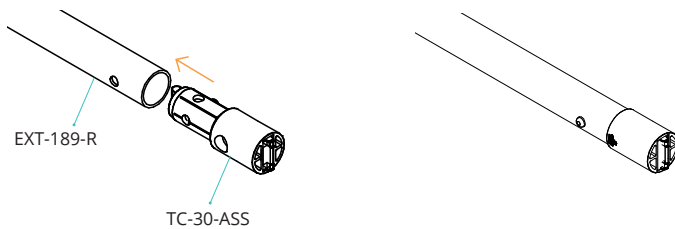


- 1** Assemble the corners using the mounting brackets and assembly markings.

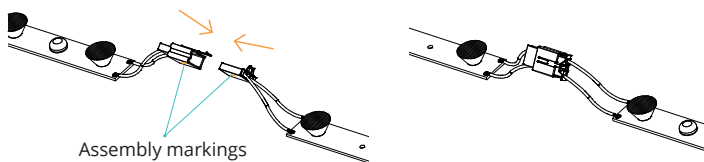
△ Slightly loosen the screws on the angle bracket so that you can insert it into the profile channel.



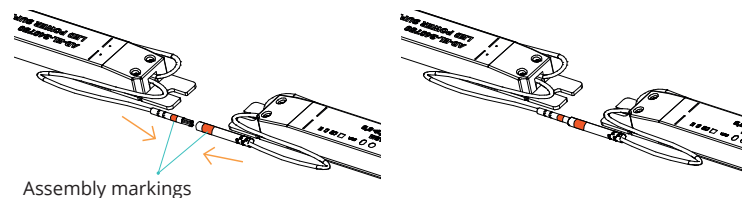
- 3** Assemble the reinforcement bars using the snap button connectors.



- 5** Connect the LED strips to each other using the assembly markings.

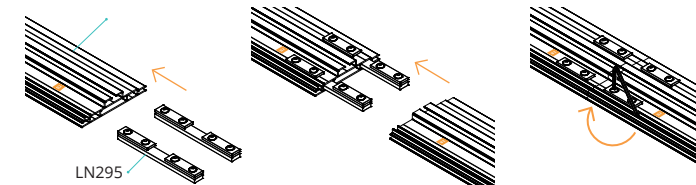


- 7** Connect the drivers together using the assembly markings.

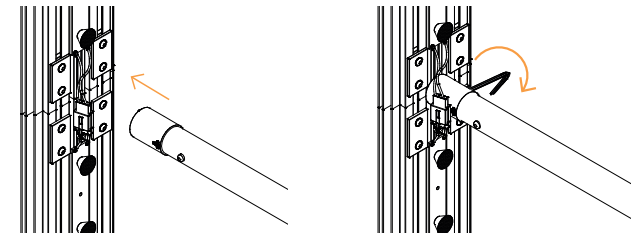


- 2** Assemble the straight sections using the connectors and assembly markings.

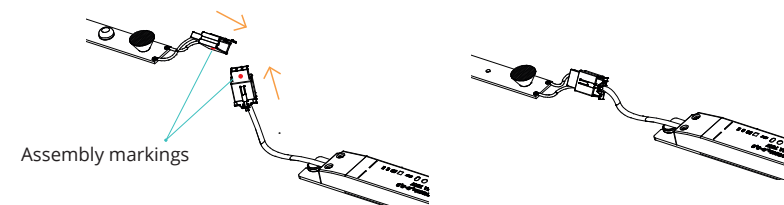
△ Slightly loosen the screws on the angle bracket so that you can insert it into the profile channel.



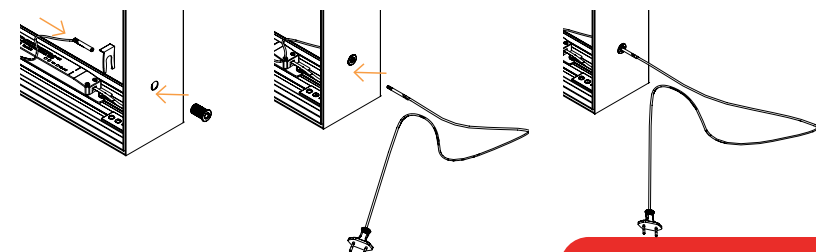
- 4** Lock the reinforcing bars to the frame.



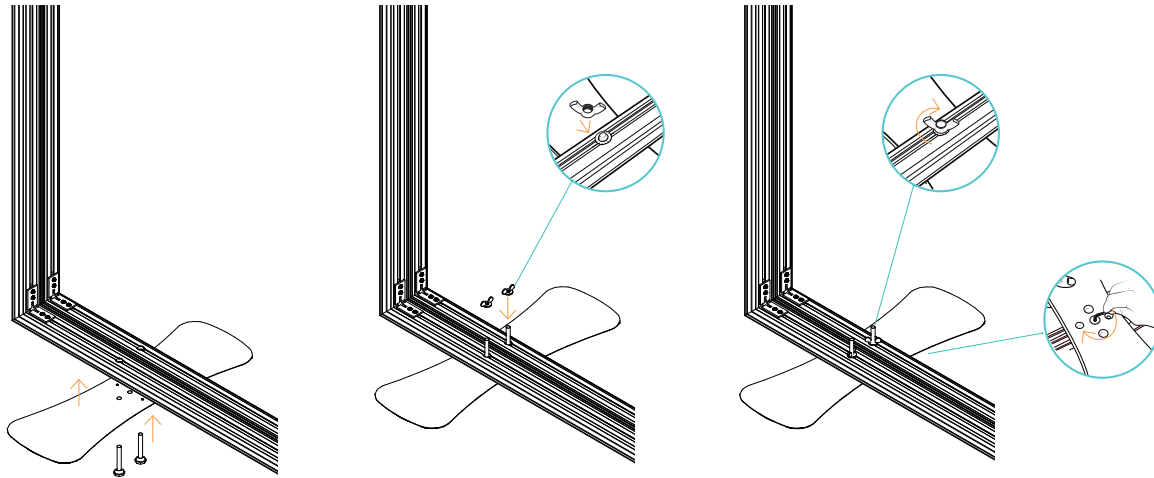
- 6** Connect the LED strips to the driver using the assembly markings.



- 8** Connect the power cord to the electrical supply using the grommet on the frame.



Stabilizer feet assembly:



Fabric assembly:

